

RPFF

Pendulum room humidity sensor

Approvals



Messtechnik

Made in Germany

RANGE

0~95 %

POWER

15 ... 36
V DC

OUTPUT

4-20mA
0~10V

SPECIFICATION

MODEL	RPFF
OUTPUT	DC4-20mA : 2 or 3-wire [3-wire for LCD backlight] 0-10V : 3-wire
POWER	15 to 36V DC
MEASURING RANGE	0 to 100% r.H.
OPERATING RANGE	0 to 95% r.H. [without formation of dew]
DEVIATION	typically $\pm 2\%$ r.H. [20...80% r.H.] at +25°C, otherwise $\pm 3\%$ r.H.
AMBIENT TEMPERATURE	-5 ... +60°C, non-precipitating
SENSOR PROTECTION	plastic sinter filter, Φ 16mm, L=35mm metal sinter filter, Φ 16mm, L=32mm*
PROTECTIVE TUBE	stainless steel, Φ =16mm, L=142mm
CABLE CONNECTION	approx.2m
CABLE GLAND	M16x1.5, max. inner diameter 10.4mm
PROTECTION TYPE	IP65 [according to EN 60529]
ELECTRICAL CONNECTION	2-, or 3-wire connection 0.14 - 1.5 mm ² , via terminal screws on circuit board

*=Optional



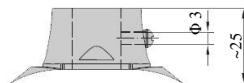
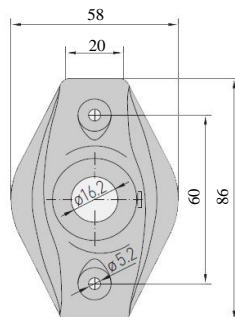
with display



without display

Mounting Flange [Plastic]

MF-16-K

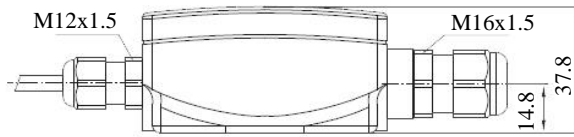
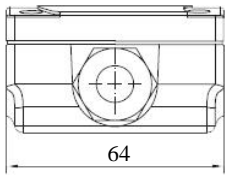


| CO2 | HUMIDITY | TEMPERATURE | AC | DC | BATTERY | OUTPUT | CONTACT | DISPLAY |

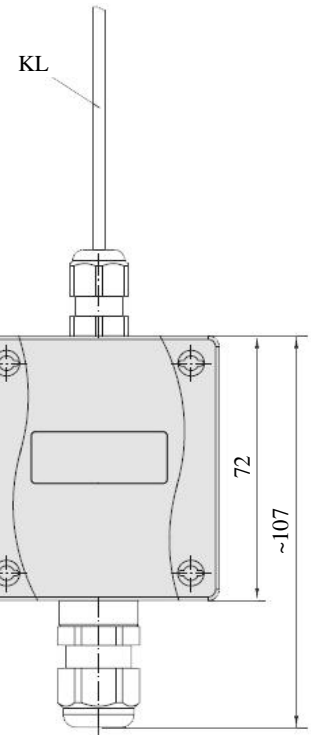
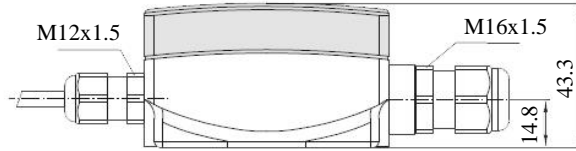
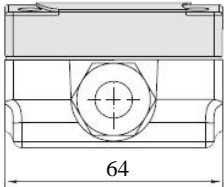
DIMENSION (mm)

※ 제품의 사양에 따라 변경 될 수 있습니다

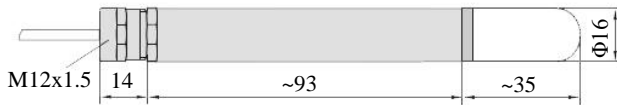
without display



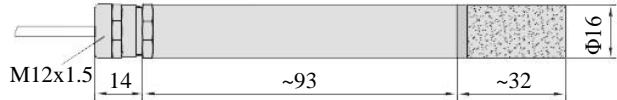
with display



plastic sinter filter [standard]



metal sinter filter [optional]



DIAGRAM

4-20mA 2 or 3-wire

1	+UB 24V DC
2	Output humidity in % r.H. 4-20mA
3	Free
4	-UB-GND [optional for backlighting]

0-10V 3-wire

1	+UB 24V DC
2	Output humidity in % r.H. 0-10V
3	Free
4	-UB-GND

| CO2 | HUMIDITY | TEMPERATURE | AC | DC | BATTERY | OUTPUT | CONTACT | DISPLAY

Ordering Information

RPFF	Model						
	<table border="1"> <thead> <tr> <th>Code</th> <th>Output</th> </tr> </thead> <tr> <td>I</td> <td>4-20mA</td> </tr> <tr> <td>U</td> <td>0~10VDC</td> </tr> </table>	Code	Output	I	4-20mA	U	0~10VDC
Code	Output						
I	4-20mA						
U	0~10VDC						

		Code	Display		------	---------		1	without		2	with	
		Code	Sinter Filter		------	----------------		1	Plastic [std.]		2	Metal	
		Code	Cable Length		------	----------------		1	≒ 2M [std.]		2	Other [___M]	
RPFF	**Complete Ordering Code**												

TYPE & IMAGE

		 <p>metal sinter filter [Optional]</p>
<p>RPFF-I-1-1-1 RPFF-U-1-1-1</p>	<p>RPFF-I-2-1-1 RPFF-U-2-1-1</p>	

| CO2 | HUMIDITY | TEMPERATURE | AC | DC | BATTERY | OUTPUT | CONTACT | DISPLAY